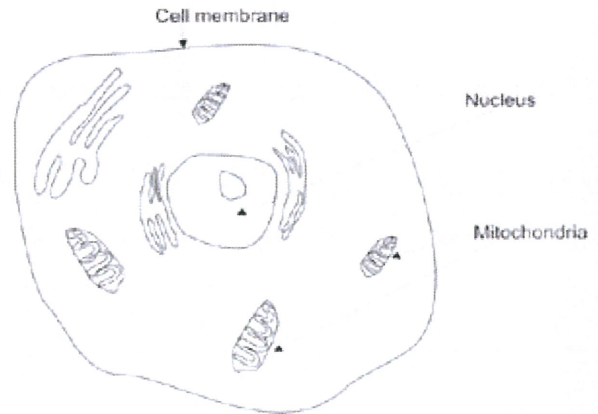


Basic structure

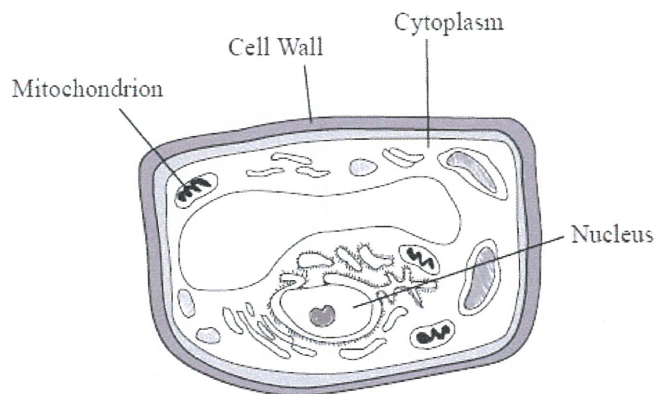
Animal

- Outer cell/plasma membrane
- Mostly jelly-like cytoplasm inside containing organelles e.g. mitochondria
- Nucleus



Plant

- Surrounding cell wall
- Outer cell/plasma membrane
- cytoplasm containing organelles e.g. mitochondria
- Nucleus
- Large central vacuole (space)
- Chloroplasts (in some types)



Other organelles include

- Mitochondria
- Ribosomes
- Endoplasmic reticulum
- Golgi body

Plant vs animal cells

<i>plant</i>	<i>animal</i>
<ul style="list-style-type: none">• Surrounding cell wall• Chloroplasts in some types• Large CENTRAL vacuole	<ul style="list-style-type: none">• NO cell wall• NO Chloroplasts• Only SMALL vacuoles

Both plant and animal cells share some common characteristics i.e. plasma membrane, cytoplasm, nucleus and many types of organelles. However, there are some differences in structure that can be used to tell them apart i.e. only plant cells have a cell wall, chloroplasts and a large central vacuole.